

Optional Items



Pass-through
Door Switch
Module



Rotary Attachment



SmartAIR Nozzle



SmartGUARD™ Fire
Alarm (Patented)



External Control
Interface Board



SmartPRINT™



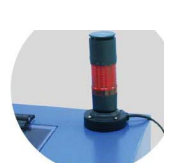
Multi-purpose
Integrated SmartBOX™



Air Compressor Unit



Fume Extraction System



External Signal Indicator



AAS Contour Cutting
Device (Patented)

Specification

Spirit GLS

Work Area	34 x 24 in. (860 x 610 mm) Extendable to 38 x 24 in. (960 x 610 mm)	
Max. Part Size (L x W x H)	All doors closed	39 x 25 x 7 in. (990 x 635 x 177 mm)
	All doors open	39 x ∞ x 7 in. (990 x ∞ x 177 mm)
Table Size	40.3 x 27.7 in. (1025 x 705 mm)	
Dimensions	53.7 x 34.6 x 39.7 in. (1365 x 880 x 1010 mm)	
Laser Source	30 to 100W 10.6-μm sealed CO2 Laser / 20W & 60W 9.3-μm sealed CO2 Laser	
Cooling	Air-cooled, Operating environment temperature 15°- 30°C (60°- 86°F)	
Drive	Closed-loop DC servo control	
Maximum Speed*	80 IPS	
Speed Control	Adjustable from 0.1-100% (Up to 16 color-linked speed settings per job)	
Power Control	Adjustable from 0-100% (Up to 16 color-linked power settings per job)	
Engraving Capability	256-level gray scale image processing capability	
Distance Accuracy	0.254 mm or 0.1% of move, whichever is greater	
Z-Axis Movement	Automatic	
Focus Lens	CO2: Standard 2.0" (Optional 1.5", 2.5" & 4.0"), Fiber: Standard 2.0" (Optional 4.0"), Dual (CO2+Fiber): Standard 2.0" (Optional 3.0" & 4.0")	
Resolution (DPI)	Available 125, 250, 300, 380, 500, 600, 760, 1000, 1500	
Interface	10 Base-T Ethernet USB Type-A 2.0 - For USB storage (Max. 32GB capacity, FAT file system) USB Type-B 2.0 - For connecting with the computer	
Compatible Operating Systems	MS Windows	
Display Panel	4-line LCD display showing current file name, total working time, laser power, engraving speed, file(s) loaded into memory buffer, setup and diagnostic menus	
Safety	Class I Laser Product Compliant with EN60825, Class II Laser Product Compliant with CDRH 2006/42/EC Machinery Directive Compliance Class 4 Laser Product Compliant with CDRH with the optional pass-through door module	
Operation Voltage	Laser below 80Watt, 100-240VAC, 50-60Hz Auto Switching, Max. 15A Laser 80Watt and above, 200-240VAC, 50-60Hz, Max. 15A	
Fume Extraction System	External exhaust system with minimum flow rate 800m³/h (CFM 471 ft³/min) is required, 2.3kPA negative pressure (Pure-Air PA-1500FS @ 4" exhaust port)	

* Speed does not equal to throughput. See dealer or visit www.GCCworld.com for more details.

* The flow rate is determined by a default fume extraction system; the flow rate may vary due to a different fume extraction system.

Δ Specifications are subject to change without prior notice.

***Please use certified brands by GCC for LaserPro USB storage, kindly refer to GCC User Manuals for more details.

Uscribe

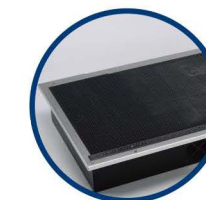
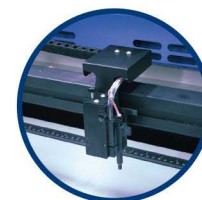
Technology Systems

Laser Engraver

The Epitome of Excellence

GCC LaserPro Spirit GLS

The most advanced laser engraver engineered to deliver unrivaled output performance



Spirit GLS

- 38" x 24" (960 mm x 610 mm) extra large working area
- QSM (Quality Speed Mode) maintains 100% engraving quality while operating at maximum speed
- Patented SmartACT™ motion control technology increases your productivity by reducing ramping process and job running time
- Drag and engrave feature assures remarkably easy and fast set-ups
- High speed DC motor runs up to 80IPS for precise and rapid movement of the laser carriage
- Reliable DuraGuide motion system with reinforced Kevlar belt delivers superb output quality
- Pass-through front and rear doors to accommodate long working pieces

Uscribe
Technology Systems

500 Dowling Street
Wendouree VIC 3355
1800 677 344
sales@uscribe.com.au
www.uscribe.com.au



Technology Systems

SmartLID™ (Patented)

An innovative lid that opens from both ends allowing easier access for daily maintenance.



Laser Engraver

GCC LaserPro Spirit GLS



GCC LaserPro Spirit GLS

The LaserPro Spirit GLS is the flagship model of the award winning LaserPro Spirit line of laser engravers. The Spirit series has received worldwide accolades from the signs and awards industry since its introduction. The Spirit GLS is equipped with sensible upgrades to further boost overall usability.

DuraGuide

Systematic and reliable motion system embedded with strong mechanical framework, reinforced Kevlar belts, and accurate servomotor control technology to deliver superb output quality under rapid movement.



SmartLIGHT

LED light modules illuminate the working area showing the progress and details of each job.



SmartACT™ (Patented)

Ground-breaking technology that reduces the ramping process, the job running time, which translates into higher productivity.



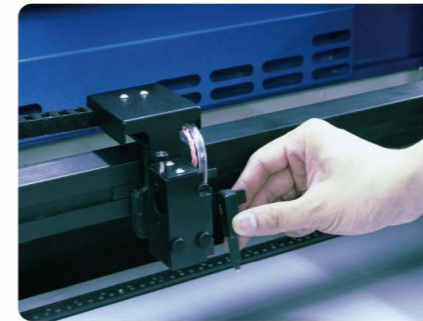
Easy to Use Control Panel

A control panel with coherent hot-key design and graphic icon displays that allows you to directly change the laser parameter setting, set jobs to repeat unlimited times, queue jobs, delete jobs, and more.



Pass-through Front and Rear Doors (Optional)

Optional front and rear door design enables loading of extremely long working pieces.



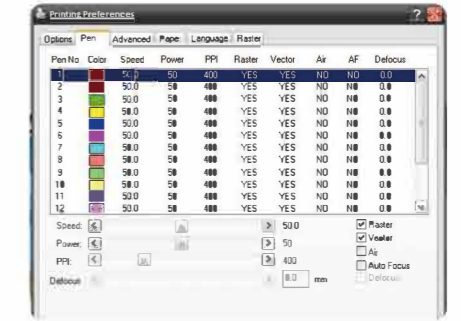
SmartPIN AutoFocus (Patented)

The plug-and-play probe design makes focusing a one-touch process and provides the accuracy and precision required for optimum quality in the lasing process.



Key Switch & Emergency Stop

Key switch safeguards the machine from unauthorized use. Prominent emergency button located on the top of the machine allows operators to stop the laser and the motion carriage immediately to provide a safe operating environment.



Innovative Software Features

Various user friendly features such as SmartCENTER, Defocus by pen, allow users to reduce set up time and make easy adjustments to achieve marvelous output quality.