

## Optional Items

2650112G(06)



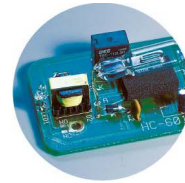
Pass-through Door Switch Module



Rotary Attachment



SmartAIR Nozzle



SmartGUARD™ Fire Alarm (Patented)



External Control Interface Board



SmartPRINT™



Flame Sprinkler System



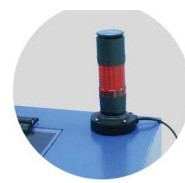
SmartBOX™ Cutting Accessory



Air Compressor Unit



Fume Extraction System



External Signal Indicator

## Specification

## Spirit LS

Work Area	25 x 18 in. (640 x 460 mm) Extendable to 29 x 18 in. (740 x 460 mm)	
Max. Part Size (L x W x H)	All doors closed	30 x 19 x 6.5 in. (762 x 482.6 x 165 mm)
	All doors open	30 x ∞ x 6.5 in. (762 x ∞ x 165 mm)
Table Size	31.1 x 20.9 in. (790 x 530 mm)	
Dimensions	44.3 x 28.3 x 39.6 in. (1125 x 720 x 1005 mm)	
Laser Source	12 to 100W 10.6-µm sealed CO2 Laser / 20W & 60W 9.3-µm sealed CO2 Laser	
Cooling	Air-cooled, Operating environment temperature 15°- 30°C (60°- 86°F)	
Drive	Closed-loop DC servo control	
Maximum Motor Speed	80 IPS**	
Speed Control	Adjustable from 0.1-100% (Up to 16 color-linked speed settings per job)	
Power Control	Adjustable from 0-100% (Up to 16 color-linked power settings per job)	
Engraving Capability	256-level gray scale image processing capability	
Distance Accuracy	0.254 mm or 0.1% of move, whichever is greater	
Z-Axis Movement	Automatic	
Focus Lens	Standard 2.0", optional 1.5", 2.5", & 4.0" available	
Resolution (DPI)	Available 125, 250, 300, 380, 500, 600, 760, 1000, 1500	
Interface	10 Base-T Ethernet	
	USB Type-A 2.0 ( ) – For USB storage (Max. 32GB capacity, FAT file system)	
	USB Type-B 2.0 ( ) – For connecting with the computer	
Compatible Operating Systems	MS Windows	
Display Panel	4-line LCD display showing current file name, total working time, laser power, engraving speed, file(s) loaded into memory buffer, setup and diagnostic menus	
Safety	Class I Laser Product Compliant with EN60825, Class II Laser Product Compliant with CDRH, 2006/42/EC Machinery Directive Compliance	
	Class 4 Laser Product Compliant with CDRH with the optional pass-through door module	
Operation Voltage	Laser below 80Watt, 100-240VAC, 50-60Hz Auto Switching, Max. 15A Laser 80Watt and above, 200-240VAC, 50-60Hz, Max. 15A	
Fume Extraction System	External exhaust system with minimum flow rate 640m³/h (CFM 377 ft³/h) is required, 2.3kPA negative pressure (Pure-Air PA-1000FS @ 4" exhaust port)	

\* Speed does not equal to throughput. See dealer or visit [www.GCCworld.com](http://www.GCCworld.com) for more details.

\*\* For 30W and above models. (60 IPS for 12W & 25W models)

△ Specifications are subject to change without prior notice.

\* The flow rate is determined by a default fume extraction system; the flow rate may vary due to a different fume extraction system.

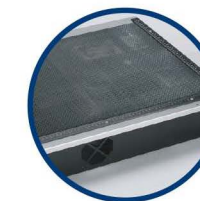
# uscribe

Technology Systems

Laser Engraver

# GCC LaserPro Spirit LS

Smart Innovative Evolution at Its Best



## Spirit LS

- 25" x 18" (640 x 460 mm) working area
- Up to 80 IPS high working speed
- Patented SmartACT™ motion control technology for higher throughput
- Closed-loop DC servo motor for precise movement of laser carriage
- Reliable DuraGuide motion system with reinforced Kevlar belt delivers superb output quality
- Pass-through front and rear doors to accommodate long working pieces
- Plug and play standard USB port for rapid data transmission
- Patented SmartGUARD™ fire alarm device to provide maximum operation safety

**uscribe**  
Technology Systems

500 Dowling Street  
Wendouree VIC 3355  
1800 677 344  
sales@uscribe.com.au  
www.uscribe.com.au



Laser Engraver

# GCC LaserPro Spirit LS

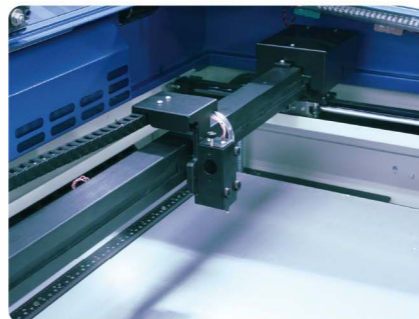


## GCC LaserPro Spirit LS

LaserPro Spirit LS distinguishes itself from the competition by combining output quality, reliability, and user-friendliness. With an abundance of useful and innovative features, the Spirit LS sets the standard as the industrial benchmark for laser engravers.

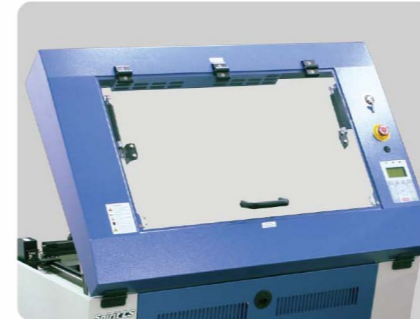
### DuraGuide

Systematic and reliable motion system embedded with strong mechanical framework, reinforced Kevlar belts, and accurate servomotor control technology to deliver superb output quality under rapid movement.



### SmartLID™ (Patented)

An innovative lid that opens from both ends allowing easier access for daily maintenance.



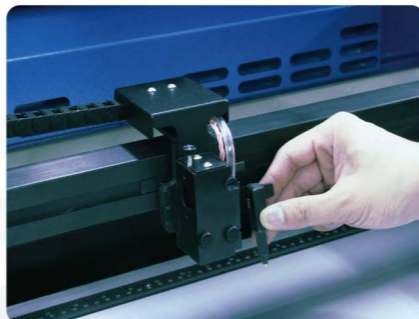
### SmartACT™ (Patented)

Ground-breaking technology that reduces the ramping process, the job running time, which translates into higher productivity.



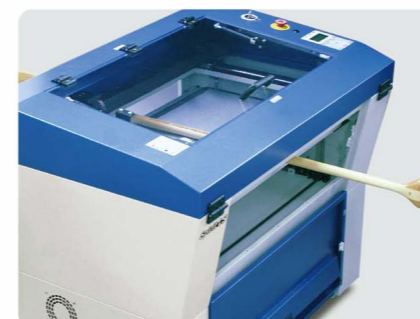
### Easy to Use Control Panel

A control panel with coherent hot-key design and graphic icon displays that allows you to directly change the laser parameter setting, set jobs to repeat unlimited times, queue jobs, delete jobs, and more.



### SmartPIN AutoFocus (Patented)

The plug-and-play probe design makes focusing a one-touch process and provides the accuracy and precision required for optimum quality in the lasing process.



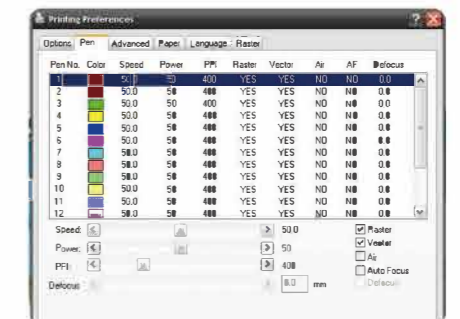
### Pass-through Front and Rear Doors (Optional)

Optional front and rear door design enables loading of extremely long working pieces.



### Key Switch & Emergency Stop

Key switch safeguards the machine from unauthorized use. Prominent emergency button located on the top of the machine allows operators to stop the laser and the motion carriage immediately to provide a safe operating environment.



### Innovative Software Features

Various user friendly features such as SmartCENTER, Defocus by pen, allows users to reduce set up time and make easy adjustments to achieve marvelous output quality.